

CAPTAIN MICHALIS X



PARTICULARS

Vessel Type	Azimuth Stern Drive (ASD) Tug
IMO Number	9578567
Port of Registry	Piraeus
Year Built	2012
Classification Notations	Bureau Veritas 100A1, Tug, FIFI-1 with water spray LMC, IWS

DETAILS

Length Overall	30.8 m
Breadth	11 m
GRT-NRT	442/132
Depth Moulded	6.1 m
Maximum draft	4.6 m
Clear deck Space	62 m ²
Max Speed/ Consumption 24 h/ ECO	12.5 kn / 11 m ³ / 7 m ³
Bollard Pull by Stern	75 t
Bollard Pull by Bow	71.76 t
Rudders	2 AZIMUTH Thrusters (ASD)
Joystick	Fitted

CAPACITY

Fuel Oil	187.14 tons
Fresh Water	33.09 tons
Foam	35.10 tons

MACHINERY

Main Engines	2x Niigata 6L28HX – 2,465 BHP each
Generators	2x NORDHAVN /SCANIA GASI12-07 - 150 KW each 1x Cummins CCJF60KCS 60 KW
Propulsion	2x Z-peller / ZP-41, 2,700 mm / 220 rpm

ACCOMMODATION

Cabins 5
Berths 8

FIRE FIGHTING

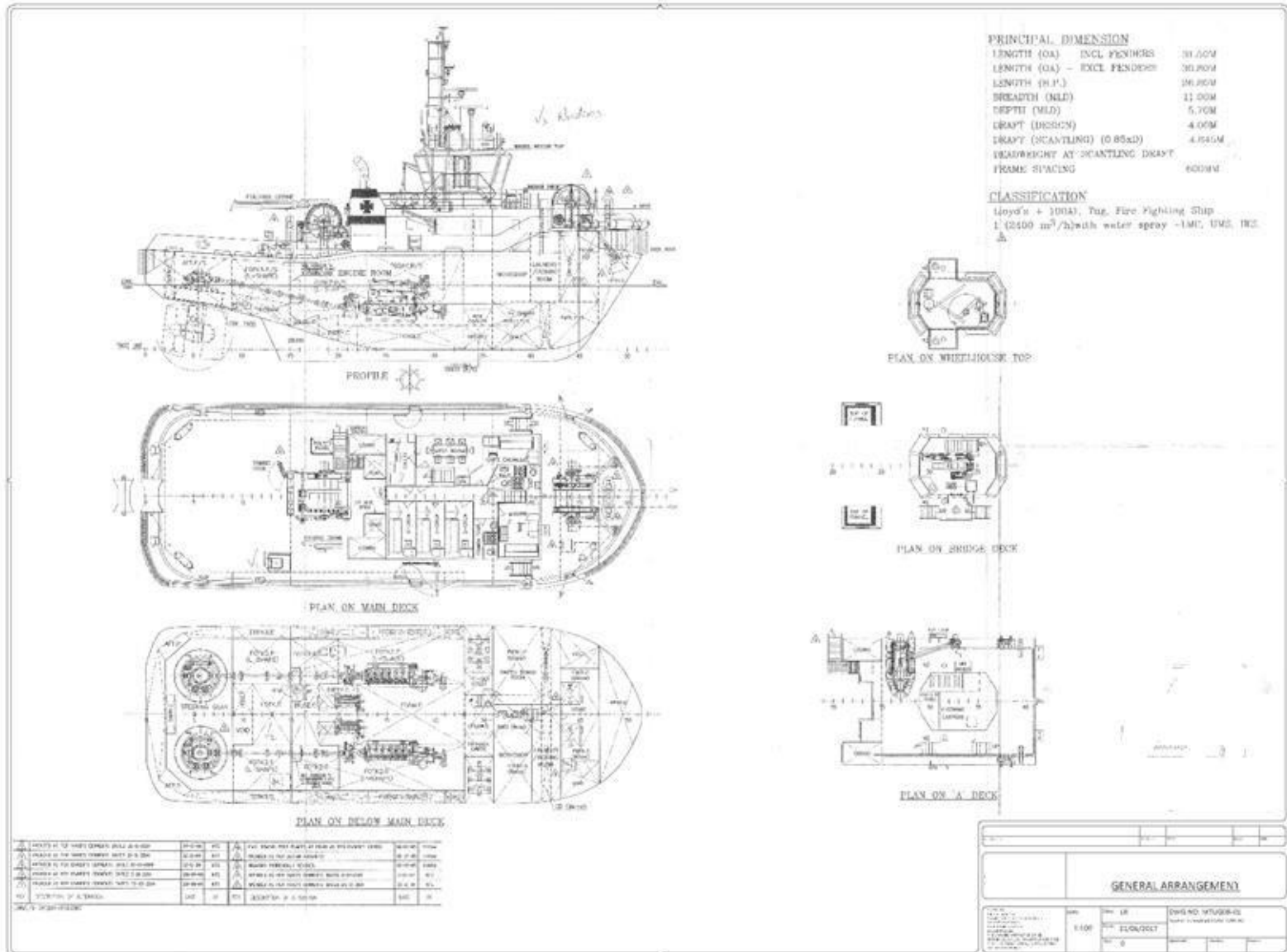
Class FIFI I
Monitors 2 x 1200 m³/h
Pumps 2700 m³/h

DECK EQUIPMENT

Aft Winch Hydr. IBERCISA MR-H/170/2/800-52/is
Forward Winch Hydr. ME2.2THAW30TTW
Hydraulic Crane FASSI, 1.325 t

LIFESAVING

Liferafts 2 x 10 persons



Particulars are believed to be correct but are not guaranteed. All figures given are approximate only. Owners reserve the right to amend the specifications without notification.